

Anti-Calsyntenin-1 / CLSTN1 antibody



Catalog Number: 104676

Product name

Anti-Calsyntenin-1 / CLSTN1 antibody

Immunogen

[Human Calsyntenin-1 / CLSTN1 \(His Tag\) recombinant protein](#)

Specificity

Human Calsyntenin-1 / CLSTN1

Antibody description

Rabbit polyclonal to Calsyntenin-1 / CLSTN1

Preparation

Produced in rabbits immunized with purified, recombinant Human Calsyntenin-1 / CLSTN1 (rh Calsyntenin-1 / CLSTN1; NP_001009566.1; Met1-Thr859). Calsyntenin-1 / CLSTN1 specific IgG was purified by Human Calsyntenin-1 / CLSTN1 affinity chromatography.

Formulation

0.2 µm filtered solution in PBS with 5% trehalose

Storage

This antibody can be stored at 2°C-8°C for one month without detectable loss of activity. Antibody products are stable for twelve months from date of receipt when stored at -20°C to -80°C.

Preservative-Free.

Sodium azide is recommended to avoid contamination (final concentration 0.05%-0.1%). It is toxic to cells and should be disposed of properly. Avoid repeated freeze-thaw cycles.

Clonality

Polyclonal

Ig Type

Rabbit IgG

Applications

ELISA, IHC-P

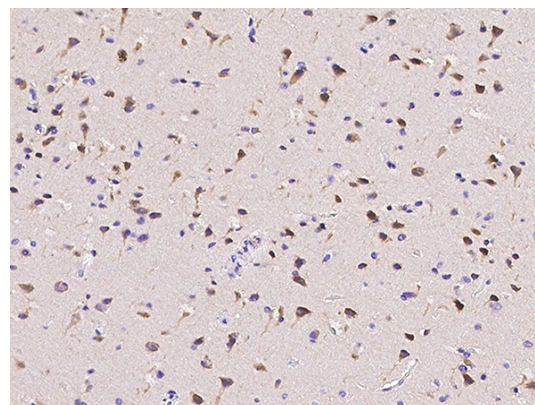
Dilutions

ELISA: 0.1-0.2 µg/mL

This antibody can be used at 0.1-0.2 µg/mL with the appropriate secondary reagents to detect Human Calsyntenin-1 / CLSTN1. The detection limit for Human Calsyntenin-1 / CLSTN1 is < 0.039 ng/well.

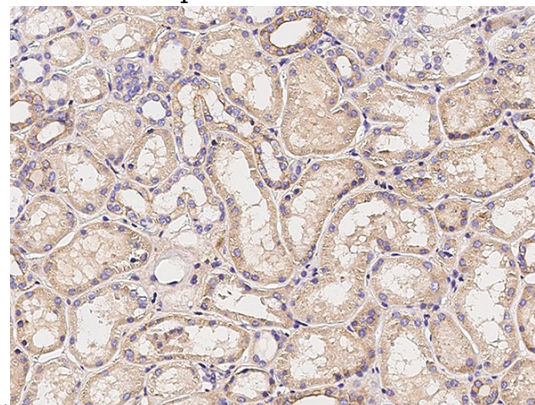
IHC-P: 0.1-2 µg/ml

Validations



Calsyntenin-1 / CLSTN1 Antibody, Rabbit PAb, Antigen Affinity Purified, Immunohistochemistry

Immunochemical staining of human CLSTN1 in human brain with rabbit polyclonal antibody (0.2 µg/mL, formalin-fixed paraffin embedded



sections).

Calsyntenin-1 / CLSTN1 Antibody, Rabbit PAb,

Anti-Calsyntenin-1 / CLSTN1 antibody



Catalog Number: 104676

Antigen Affinity Purified, Immunohistochemistry

Immunochemical staining of human CLSTN1 in

human kidney with rabbit polyclonal antibody (0.5 μ g/mL, formalin-fixed paraffin embedded sections).