

# Anti-CARKL / SHPK antibody



Catalog Number: 104592

## Product name

Anti-CARKL / SHPK antibody

## Immunogen

[Human CARKL / SHPK \(His & GST Tag\) recombinant protein](#)

## Specificity

Human CARKL / SHPK

## Antibody description

Rabbit polyclonal to CARKL / SHPK

## Preparation

Produced in rabbits immunized with purified, recombinant Human CARKL / SHPK (rh CARKL / SHPK; NP\_037408.2; Ala2-Ser478). CARKL / SHPK specific IgG was purified by Human CARKL / SHPK affinity chromatography.

## Formulation

0.2 µm filtered solution in PBS with 5% trehalose

## Storage

This antibody can be stored at 2°C-8°C for one month without detectable loss of activity. Antibody products are stable for twelve months from date of receipt when stored at -20°C to -80°C.

Preservative-Free.

Sodium azide is recommended to avoid contamination (final concentration 0.05%-0.1%). It is toxic to cells and should be disposed of properly. Avoid repeated freeze-thaw cycles.

## Clonality

Polyclonal

## Ig Type

Rabbit IgG

## Applications

ELISA, WB, IHC-P, IP

## Dilutions

WB: 10-20µg/ml

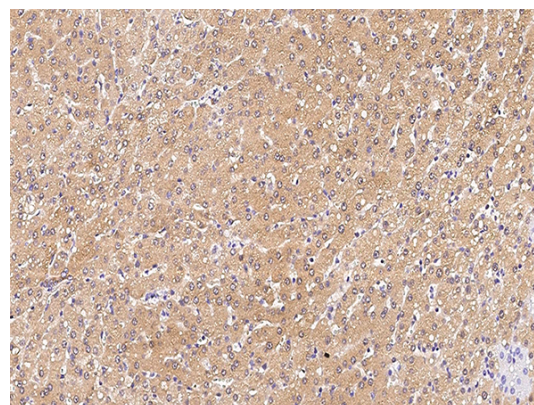
ELISA: 0.1-0.2 µg/mL

This antibody can be used at 0.1-0.2 µg/mL with the appropriate secondary reagents to detect Human CARKL / SHPK. The detection limit for Human CARKL / SHPK is < 0.039 ng/well.

IHC-P: 0.1-2 µg/mL

IP: 1-4 µg/mg of lysate

## Validations



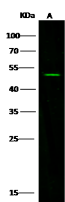
CARKL / SHPK Antibody, Rabbit PAb, Antigen Affinity Purified

Immunochemical staining of human SHPK in human liver with rabbit polyclonal antibody (0.3 µg/mL, formalin-fixed paraffin embedded

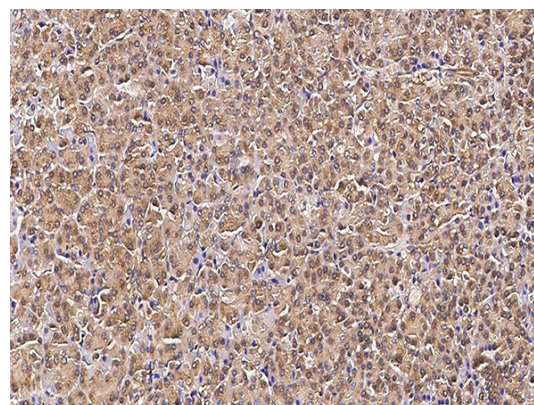
# Anti-CARKL / SHPK antibody



Catalog Number: 104592

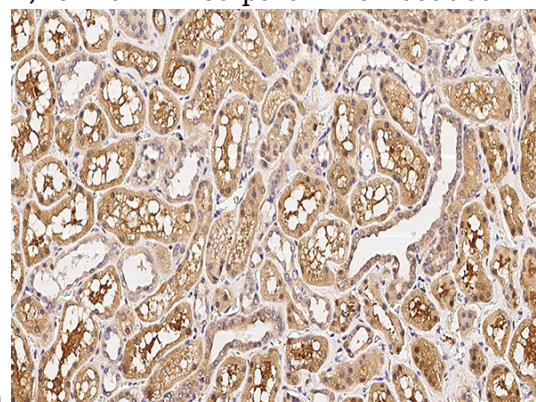


Lanes	A
Items	Jurkat
Sample (whole cell lysate)	
Sample Volume (µg/lane)	.30
Gel	13% SDS-PAGE reducing gel
Recommended Concentration	10-20 µg/ml
Secondary Antibody	Dylight 800 labeled Antibody to Rabbit IgG (H+L), at 1:5000 dilution
Developed using Odyssey imaging system.	
Explanation	Predicted band size : 51 kDa Observed band size : 51 kDa



CARKL / SHPK Antibody, Rabbit PAb, Antigen Affinity Purified

Immunochemical staining of human SHPK in human pancreas with rabbit polyclonal antibody (0.3 µg/mL, formalin-fixed paraffin embedded



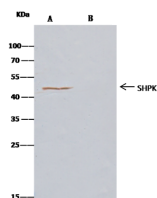
sections).

CARKL / SHPK Antibody, Rabbit PAb, Antigen Affinity Purified

Immunochemical staining of human SHPK in human kidney with rabbit polyclonal antibody (0.3 µg/mL, formalin-fixed paraffin embedded sections).

sections).

CARKL / SHPK Antibody, Rabbit PAb, Antigen Affinity Purified, Western blot



Lanes	A	B
Items	Jurkat	
Sample (whole cell lysate)		
Sample quantity	0.5 mg	
IP antibody type	HG3C-SHPK-RP02	Rabbit blank IgG
IP antibody quantity	2 µg	
Protein G agarose	15 µl of 50% Protein G Agarose	
Gel	13% SDS-PAGE reducing gel	
Primary antibody	HG3C-SHPK antibody at 10 µg/ml [Cat# 14833-RP02]	
Secondary antibody	Clean-Block IP Detection Reagent (HRP) at 1:1000 dilution	

CARKL / SHPK Antibody, Rabbit PAb, Antigen Affinity Purified, Immunoprecipitation