

Catalog Number: 104537

Product name

Anti-glutaredoxin-1 / GRX1 / GLRX antibody

Immunogen

[Human glutaredoxin-1 / GRX1 / GLRX \(His Tag\) recombinant protein](#)

Specificity

Human glutaredoxin-1 / GRX1 / GLRX
No cross-reactivity in ELISA with Human cell lysate (293 cell line)

Antibody description

Rabbit polyclonal to glutaredoxin-1 / GRX1 / GLRX

Preparation

Produced in rabbits immunized with purified, recombinant Human glutaredoxin-1 / GRX1 / GLRX (rh glutaredoxin-1 / GRX1 / GLRX; P35754; Met1-Gln106). glutaredoxin-1 / GRX1 / GLRX specific IgG was purified by Human glutaredoxin-1 / GRX1 / GLRX affinity chromatography.

Formulation

0.2 µm filtered solution in PBS with 5% trehalose

Storage

This antibody can be stored at 2°C-8°C for one month without detectable loss of activity. Antibody products are stable for twelve months from date of receipt when stored at -20°C to -80°C. Preservative-Free.

Sodium azide is recommended to avoid contamination (final concentration 0.05%-0.1%). It is toxic to cells and should be disposed of properly. Avoid repeated freeze-thaw cycles.

Clonality

Polyclonal

Ig Type

Rabbit IgG

Applications

ELISA, WB, IHC-P

Dilutions

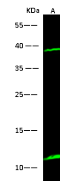
WB: 10-20 µg/ml

ELISA: 0.1-0.2 µg/mL

This antibody can be used at 0.1-0.2 µg/mL with the appropriate secondary reagents to detect Human glutaredoxin-1 / GRX1 / GLRX. The detection limit for Human glutaredoxin-1 / GRX1 / GLRX is < 0.039 ng/well.

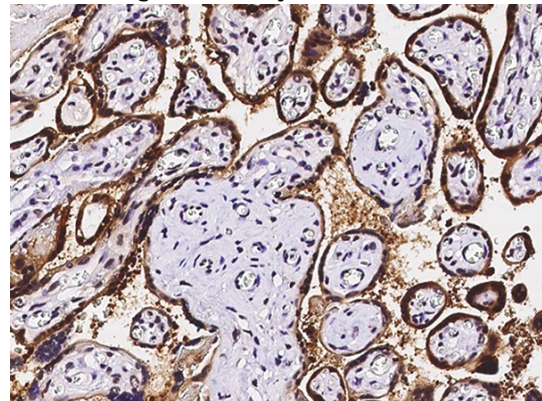
IHC-P: 0.05-0.5 µg/ml

Validations



Lanes	A
Sample (whole cell lysate)	Jurkat
Sample Volume (µg/lane)	30
Gel	13% SDS-PAGE reducing gel
Recommended Concentration	10-20 µg/ml
Secondary Antibody	Dylight 800 labeled Antibody to Rabbit IgG (H+L), at 1:5000 dilution.
Explanation	Developed using Odyssey imaging system. Predicted band size: 12 kDa Observed band size: 12 kDa Additional bands at: 38 kDa [We are unsure as to the identity of these extra bands. They are possible non-specific binding].

glutaredoxin-1 / GRX1 / GLRX Antibody, Rabbit PAb, Antigen Affinity Purified, Western blot



glutaredoxin-1 / GRX1 / GLRX Antibody, Rabbit PAb, Antigen Affinity Purified,

Anti-glutaredoxin-1 / GRX1 / GLRX antibody



Catalog Number: 104537

Immunohistochemistry

human placenta with rabbit polyclonal antibody
(0.1 µg/mL, formalin-fixed paraffin embedded
sections).

Immunochemical staining of human GLRX in