

Anti-PNP antibody



Catalog Number: 104126

Product name

Anti-PNP antibody

Immunogen

[Human PNP \(His Tag\) recombinant protein](#)

Specificity

Human Purine nucleoside phosphorylase / PNP

Antibody description

Rabbit monoclonal to PNP

Preparation

This antibody was obtained from a rabbit immunized with purified, recombinant Human Purine nucleoside phosphorylase / PNP (rh Purine nucleoside phosphorylase / PNP; P00491; Met 1-Ser 289).

Formulation

0.2 μm filtered solution in PBS with 5% trehalose

Storage

This antibody can be stored at 2°C-8°C for one month without detectable loss of activity. Antibody products are stable for twelve months from date of receipt when stored at -20°C to -80°C.

Preservative-Free.

Sodium azide is recommended to avoid contamination (final concentration 0.05%-0.1%). It is toxic to cells and should be disposed of properly. Avoid repeated freeze-thaw cycles.

Clonality

Monoclonal

Ig Type

Rabbit IgG

Applications

ELISA, WB, IP

Dilutions

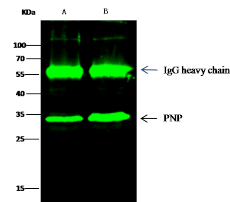
WB: 2-5 $\mu\text{g}/\text{mL}$

ELISA: 0.1-0.2 $\mu\text{g}/\text{mL}$

This antibody can be used at 0.1-0.2 $\mu\text{g}/\text{mL}$ with the appropriate secondary reagents to detect Human PNP. The detection limit for Human PNP is approximately 0.00975 ng/well.

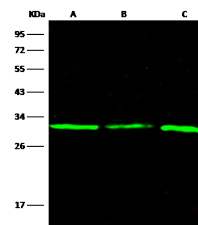
IP: 1-6 $\mu\text{g}/\text{mg}$ of lysate

Validations



Items	Lanes	A	B
Sample (whole cell lysate)		K562	Jurkat
Sample quantity		0.5 mg	
IP antibody quantity		2 μg	
Protein G agarose		15 μl of 50% Protein G Agarose	
Gel		13% SDS-PAGE-reducing gel	
Primary antibody		PNP antibody at 5 $\mu\text{g}/\text{ml}$ [Cat# 12097-R103]	
Secondary antibody		Dylight 800-labeled antibody to rabbit IgG (H+L), at 1:5000 dilution.	

Purine nucleoside phosphorylase / PNP Antibody, Rabbit MAb, Immunoprecipitation



Items	Lanes	A	B	C
Sample (whole cell lysate)		Jurkat	K562	293T
Sample Volume (cells/lane)		2.5×10^5	5×10^5	5×10^5
Gel		13% SDS-PAGE-reducing gel		
Recommended Concentration		2-5 $\mu\text{g}/\text{ml}$		
Secondary Antibody		Dylight 800-labeled Antibody To Rabbit IgG (H+L), at 1:5000 dilution.		

Purine nucleoside phosphorylase / PNP Antibody, Rabbit MAb, Western blot