

Anti-Neuroserpin/Serpini1 antibody



Catalog Number: 104095

Product name

Anti-Neuroserpin/Serpini1 antibody

Immunogen

[Human Neuroserpin/Serpini1 \(His Tag\) recombinant protein](#)

Specificity

Human Serpini1

Antibody description

Rabbit polyclonal to Neuroserpin/Serpini1

Preparation

Produced in rabbits immunized with purified, recombinant Human Serpini1 (rh Serpini1; NP_005016.1; Met 1-Leu 410). Serpini1 specific IgG was purified by Human Serpini1 affinity chromatography.

Formulation

0.2 µm filtered solution in PBS with 5% trehalose

Storage

This antibody can be stored at 2°C-8°C for one month without detectable loss of activity. Antibody products are stable for twelve months from date of receipt when stored at -20°C to -80°C.

Preservative-Free.

Sodium azide is recommended to avoid contamination (final concentration 0.05%-0.1%). It is toxic to cells and should be disposed of properly. Avoid repeated freeze-thaw cycles.

Clonality

Polyclonal

Ig Type

Rabbit IgG

Applications

ELISA, WB, IHC-P

Dilutions

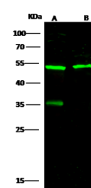
WB: 5-10 µg/mL

ELISA: 0.5-1 µg/mL

This antibody can be used at 0.5-1 µg/mL with the appropriate secondary reagents to detect Human Serpini1. The detection limit for Human Serpini1 is approximately 0.039 ng/well.

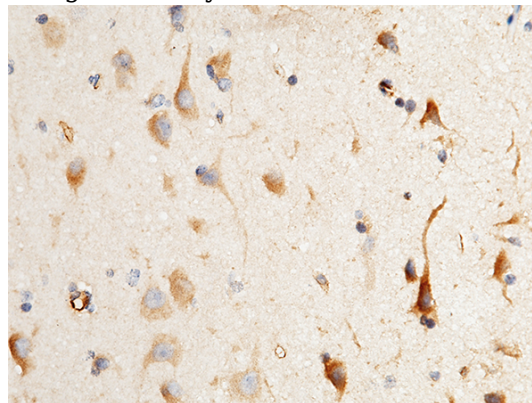
IHC-P: 0.1-2 µg/mL

Validations



Lanes		A	B
Items			
Sample		Mouse brain tissue lysate	Rat brain tissue lysate
Sample Volume (µg/lane)		30	30
Gel		13%SDS-PAGE reducing gel	
Recommended Concentration		5-10 µg/ml	
Secondary Antibody		Dylight 800 labeled Antibody to Rabbit IgG (H+L), at 1:5000 dilution.	
		Developed using Odyssey imaging system.	
Explanation		Predicted band size : 46 kDa	
		Observed band size : 52 kDa	
		Additional bands at : 35 kDa[We are unsure as to the identity of these extra bands. They are possible non-	

Serpini1 / Neuroserpin Antibody, Rabbit PAb, Antigen Affinity Purified, Western blot



Serpini1 / Neuroserpin Antibody, Rabbit PAb, Antigen Affinity Purified, Immunohistochemistry

Immunochemical staining of human Serpini1 in human brain with rabbit polyclonal antibody (1

Anti-Neuroserpin/SerpinI1 antibody



Catalog Number: 104095

µg/mL, formalin-fixed paraffin embedded sections).