

Anti-S100A1 antibody



Catalog Number: 104088

Product name

Anti-S100A1 antibody

Immunogen

[Mouse S100A1 \(His Tag\) recombinant protein](#)

Specificity

Mouse S100A1

Antibody description

Rabbit polyclonal to S100A1

Preparation

Produced in rabbits immunized with purified, recombinant Mouse S100A1 (rM S100A1; P56565; Gly 2-Ser 94). S100A1 specific IgG was purified by Mouse S100A1 affinity chromatography.

Formulation

0.2 µm filtered solution in PBS with 5% trehalose

Storage

This antibody can be stored at 2°C-8°C for one month without detectable loss of activity. Antibody products are stable for twelve months from date of receipt when stored at -20°C to -80°C.

Preservative-Free.

Sodium azide is recommended to avoid contamination (final concentration 0.05%-0.1%). It is toxic to cells and should be disposed of properly. Avoid repeated freeze-thaw cycles.

Clonality

Polyclonal

Ig Type

Rabbit IgG

Applications

ELISA, WB, IHC-P

Dilutions

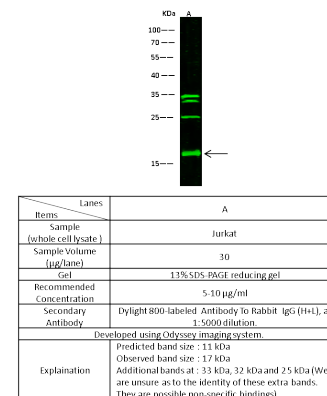
WB: 5-10 µg/mL

ELISA: 0.1-0.2 µg/mL

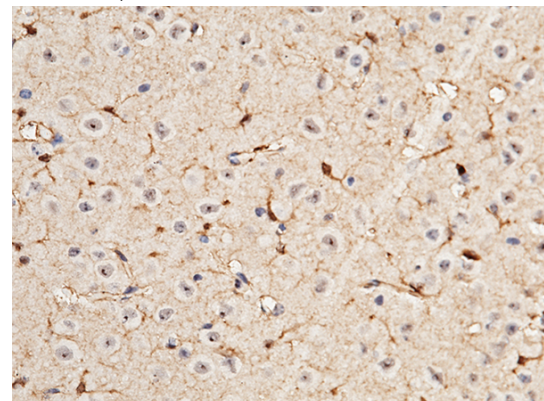
This antibody can be used at 0.1-0.2 µg/mL with the appropriate secondary reagents to detect Mouse S100A1. The detection limit for Mouse S100A1 is approximately 0.00975 ng/well.

IHC-P: 0.1-2 µg/mL

Validations



S100A1 Antibody, Rabbit PAb, Antigen Affinity Purified, Western blot

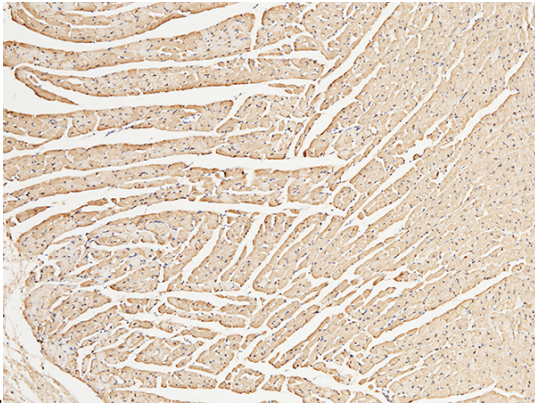


S100A1 Antibody, Rabbit PAb, Antigen Affinity Purified, Immunohistochemistry

Immunochemical staining of mouse S100A1 in mouse brain with rabbit polyclonal antibody (1 µg/mL, formalin-fixed paraffin embedded

Anti-S100A1 antibody

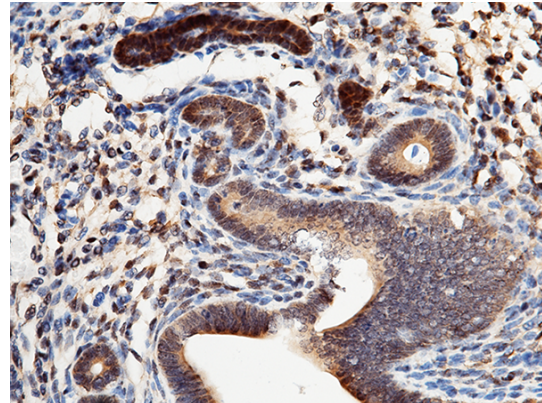
Catalog Number: 104088



sections).

S100A1 Antibody, Rabbit PAb, Antigen Affinity Purified, Immunohistochemistry

Immunochemical staining of mouse S100A1 in mouse heart with rabbit polyclonal antibody (1 $\mu\text{g}/\text{mL}$, formalin-fixed paraffin embedded sections). Positive staining was localized to cardiac muscle.



S100A1 Antibody, Rabbit PAb, Antigen Affinity Purified, Immunohistochemistry

Immunochemical staining of mouse S100A1 in mouse uterus with rabbit polyclonal antibody (1 $\mu\text{g}/\text{mL}$, formalin-fixed paraffin embedded sections). Positive staining was localized to uterine gland.