

Anti-BACE1 antibody



Catalog Number: 104076

Product name

Anti-BACE1 antibody

Immunogen

[Human BACE1 recombinant protein](#)

Specificity

Human BACE1 / ASP2

Has cross-reactivity in ELISA with Mouse BACE1; Human ADAM15

Antibody description

Rabbit monoclonal to BACE1

Preparation

This antibody was obtained from a rabbit immunized with purified, recombinant Human BACE1 / ASP2 (rh BACE1 / ASP2; NP_036236.1; Met 1-Thr 457) and conjugated with FITC under optimum conditions, the unreacted FITC was removed.

Formulation

Aqueous solution containing 0.5% BSA and 0.09% sodium azide

Storage

This antibody is stable for 12 months from date of receipt when stored at 2°C-8°C. Protected from prolonged exposure to light. Do not freeze ! Sodium azide is toxic to cells and should be disposed of properly. Flush with large volumes of water during disposal.

Clonality

Monoclonal

Ig Type

Rabbit IgG

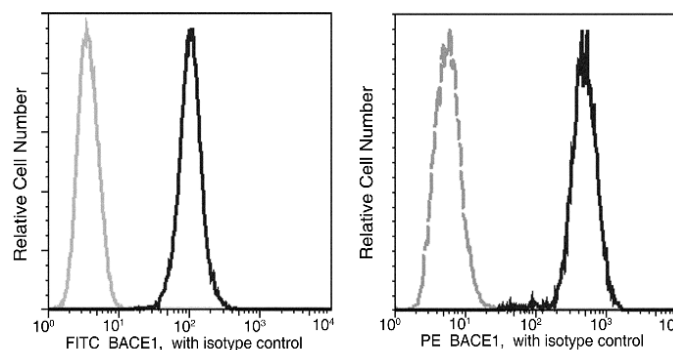
Applications

FCM

Dilutions

FCM

Validations



BACE1 / ASP2 Antibody (FITC), Rabbit MAb, Flow cytometric

Flow cytometric analysis of Human BACE1 expression in Jurkat cells. The cells were treated according to manufacturer's manual (BD Pharmingen™ Cat. No. 554714), and then stained with FITC Rabbit anti-BACE1 (10064-R027-F). The fluorescence histograms were derived from gated events with the forward and side light-scatter characteristics of intact cells.