

Anti-Osteopontin/SPP1/ETA-1 antibody



Catalog Number: 104069

Product name

Anti-Osteopontin/SPP1/ETA-1 antibody

Immunogen

[Human Osteopontin/SPP1/ETA-1 \(His Tag\) recombinant protein](#)

Specificity

Human Osteopontin / SPP1 / ETA-1

Antibody description

Rabbit monoclonal to Osteopontin/SPP1/ETA-1

Preparation

This antibody was obtained from a rabbit immunized with purified, recombinant Human Osteopontin / SPP1 / ETA-1 (rh Osteopontin / SPP1 / ETA-1; NP_001035147.1; Met 1-Asn 314).

Formulation

0.2 μ m filtered solution in PBS with 5% trehalose

Storage

This antibody can be stored at 2°C-8°C for one month without detectable loss of activity. Antibody products are stable for twelve months from date of receipt when stored at -20°C to -80°C.

Preservative-Free.

Sodium azide is recommended to avoid contamination (final concentration 0.05%-0.1%). It is toxic to cells and should be disposed of properly. Avoid repeated freeze-thaw cycles.

Clonality

Monoclonal

Ig Type

Rabbit IgG

Applications

ELISA, WB, FCM, IP

Dilutions

WB: 5-10 μ g/mL

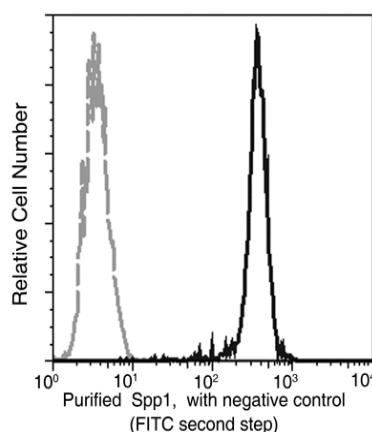
ELISA: 0.1-0.2 μ g/mL

This antibody can be used at 0.1-0.2 μ g/mL with the appropriate secondary reagents to detect Human SPP1.

FCM: 0.5-2 μ g/Test

IP: 1-4 μ g/mg of lysate

Validations



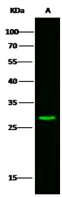
Osteopontin / SPP1 / ETA-1 Antibody, Rabbit MAb, Flow cytometric

Flow cytometric analysis of purified anti-human Spp1 on U937 cells. U937 cells were treated according to manufacturer's manual (BD Pharmingen™ Cat. No. 554714), and stained with Purified Rabbit anti-Spp1 (Bold line histogram, 1 μ g/test), To demonstrate specificity of staining the binding of anti-human Spp1 (10352-R001) was blocked by the preincubation of the purified antibody with molar excess of recombinant human Spp1 (5 μ g, Cat. No. 10352-H08H) for 1 hour (dashed line histogram), then stained with a FITC-conjugated second step antibody.

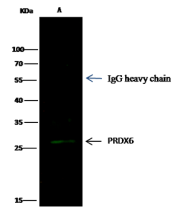
Anti-Osteopontin/SPP1/ETA-1 antibody



Catalog Number: 104069



Items	Lanes	A
Sample (whole cell lysate)		A549
Sample Volume (μ g/lane)		60
Gel		13% SDS-PAGE reducing gel
Recommended Concentration		5-10 μ g/ml
Secondary Antibody		Dylight 800-labeled Antibody To Rabbit IgG (H+L), at 1:5000 dilution.



Items	Lanes	A
Sample (whole cell lysate)		HeLa
Sample quantity		0.5 mg
IP antibody quantity		2 μ g
Protein G agarose		15 μ l of 50% Protein G Agarose
Gel		13% SDS-PAGE reducing gel
Primary antibody		PRDX6 antibody at 2 μ g/ml [Cat# 11257-MM031]
Secondary antibody		Dylight 800-labeled antibody to Rabbit IgG (H+L), at 1:5000 dilution

Western blot

Osteopontin / SPP1 / ETA-1 Antibody, Rabbit MAb,

Osteopontin / SPP1 / ETA-1 Antibody, Rabbit MAb,
Immunoprecipitation