

Anti-C1D antibody



Catalog Number: 104003

Product name

Anti-C1D antibody

Immunogen

[Human C1D \(GST Tag\) recombinant protein](#)

Specificity

Human C1D

Antibody description

Rabbit polyclonal to C1D

Preparation

Produced in rabbits immunized with purified, recombinant Human C1D (rh C1D; Q13901; Met 1-Ser 141). C1D specific IgG was purified by Human C1D affinity chromatography.

Formulation

0.2 µm filtered solution in PBS with 5% trehalose

Storage

This antibody can be stored at 2°C-8°C for one month without detectable loss of activity. Antibody products are stable for twelve months from date of receipt when stored at -20°C to -80°C.

Preservative-Free.

Sodium azide is recommended to avoid contamination (final concentration 0.05%-0.1%). It is toxic to cells and should be disposed of properly. Avoid repeated freeze-thaw cycles.

Clonality

Polyclonal

Ig Type

Rabbit IgG

Applications

ELISA, WB, IHC-P, IP

Dilutions

WB: 2-5 µg/mL

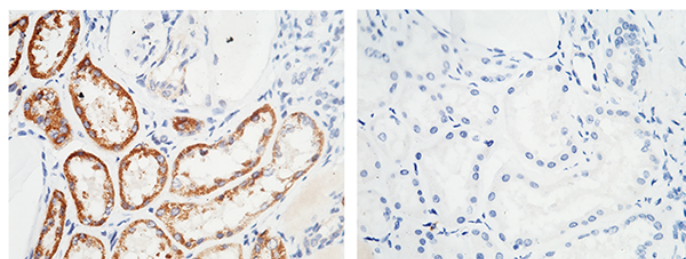
ELISA: 0.1-0.2 µg/mL

This antibody can be used at 0.1-0.2 µg/mL with the appropriate secondary reagents to detect Human C1D. The detection limit for Human C1D is approximately 0.00245 ng/well.

IHC-P: 0.1-2 µg/mL

IP: 4-6 µg/mg of lysate

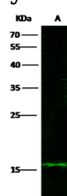
Validations



C1D Antibody +
C1D Antigen -

C1D Antibody, Rabbit PAb, Antigen Affinity Purified, Immunohistochemistry

Immunochemical staining of human C1D in human kidney with rabbit polyclonal antibody (1 µg/mL, formalin-fixed paraffin embedded sections). The left panel: tissue incubated with primary antibody; The right panel: tissue incubated with the mixture of primary antibody and antigen (recombinant



Items	Lanes	A
Sample (whole cell lysate)		HeLa
Sample Volume (µg/lane)		30
Gel		13% SDS-PAGE reducing gel
Recommended Concentration		2-5 µg/ml
Secondary Antibody		Dylight 800-labeled Antibody To Rabbit IgG (H+L), at 1:5000 dilution.

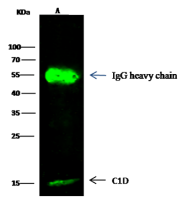
protein).

Anti-C1D antibody

Catalog Number: 104003

C1D Antibody, Rabbit PAb, Antigen Affinity

C1D Antibody, Rabbit PAb, Antigen Affinity Purified



Purified, Western blot

Items	Lanes	A
Sample (whole-cell lysate)		HeLa
Sample quantity		0.5 mg
IP antibody quantity		2 µg
Protein G agarose		15 µl of 50% Protein G Agarose
Gel		13% SDS-PAGE reducing gel
Primary antibody		C1D antibody at 10 µg/ml [Cat# 12432-8P02]
Secondary antibody		DyLight 800-labeled antibody to rabbit IgG (H+L), at 1:5000 dilution