

Anti-REG3A antibody



Catalog Number: 103955

Product name

Anti-REG3A antibody

Immunogen

[Human REG3A \(His Tag\) recombinant protein](#)

Specificity

Human REG3A

No cross-reactivity in ELISA with Human REG3G; Mouse REG3A; Human REG1B

Antibody description

Rabbit monoclonal to REG3A

Preparation

This antibody was obtained from a rabbit immunized with purified, recombinant Human REG3A (rh REG3A; Q06141-1; Met 1-Asp 175).

Formulation

0.2 µm filtered solution in PBS with 5% trehalose

Storage

This antibody can be stored at 2°C-8°C for one month without detectable loss of activity. Antibody products are stable for twelve months from date of receipt when stored at -20°C to -80°C.

Preservative-Free.

Sodium azide is recommended to avoid contamination (final concentration 0.05%-0.1%). It is toxic to cells and should be disposed of properly. Avoid repeated freeze-thaw cycles.

Clonality

Monoclonal

Ig Type

Rabbit IgG

Applications

ELISA, IHC-P

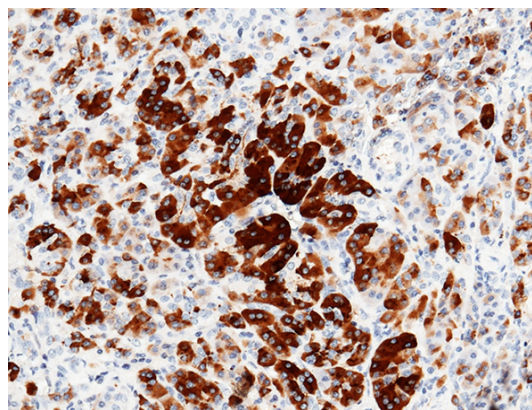
Dilutions

ELISA: 0.1-0.2 µg/mL

This antibody can be used at 0.1-0.2 µg/mL with the appropriate secondary reagents to detect Human REG3A. The detection limit for Human REG3A is approximately 0.039 ng/well.

IHC-P: 1-10 µg/mL

Validations



REG3A Antibody, Rabbit MAb,
Immunohistochemistry

Immunochemical staining of human REG3A in human pancreatic carcinoma with rabbit monoclonal antibody (5 µg/mL, formalin-fixed paraffin embedded sections).