

Anti-Insulin Receptor/CD220 antibody



Catalog Number: 103849

Product name

Rabbit IgG

Anti-Insulin Receptor/CD220 antibody

Applications

Immunogen

ELISA, IHC-P

[Human Insulin Receptor/CD220 \(long isoform, His Tag\) recombinant protein](#)

Dilutions

ELISA: 0.5-1 µg/mL

Specificity

Human Insulin Receptor / CD220 / INSR

This antibody can be used at 0.5-1 µg/mL with the appropriate secondary reagents to detect Human INSR. The detection limit for Human INSR is approximately 0.00245 ng/well.

Antibody description

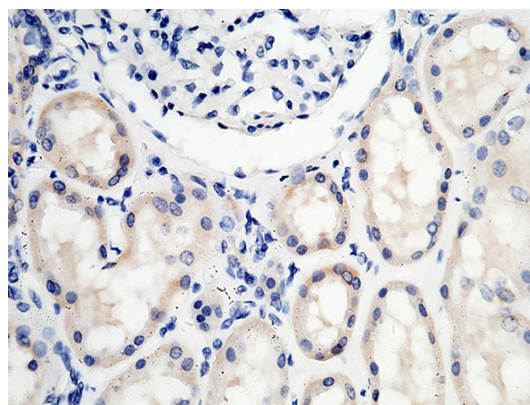
Rabbit polyclonal to Insulin Receptor/CD220

IHC-P: 1-3 µg/mL

Preparation

Produced in rabbits immunized with purified, recombinant Human Insulin Receptor / CD220 / INSR (rh Insulin Receptor / CD220 / INSR; NP_000199.2; Met 1-Lys 956). Insulin Receptor / CD220 / INSR specific IgG was purified by Human Insulin Receptor / CD220 / INSR affinity chromatography.

Validations



Formulation

0.2 µm filtered solution in PBS with 5% trehalose

Insulin Receptor / CD220 / INSR Antibody, Rabbit PAb, Antigen Affinity Purified, Immunohistochemistry

Storage

This antibody can be stored at 2°C-8°C for one month without detectable loss of activity. Antibody products are stable for twelve months from date of receipt when stored at -20°C to -80°C. Preservative-Free.

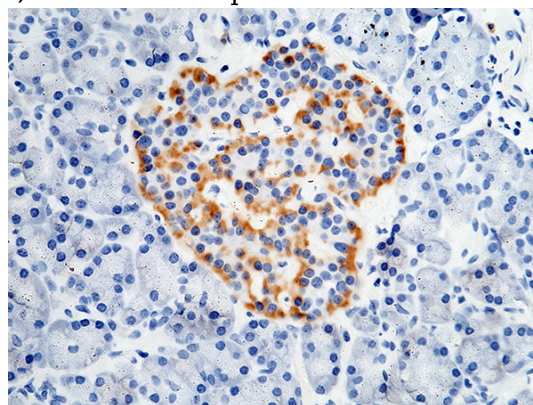
Sodium azide is recommended to avoid contamination (final concentration 0.05%-0.1%). It is toxic to cells and should be disposed of properly. Avoid repeated freeze-thaw cycles.

Clonality

Polyclonal

Ig Type

Immunochemical staining of human INSR in human kidney with rabbit polyclonal antibody (15µ g/mL, formalin-fixed paraffin embedded sections).



Anti-Insulin Receptor/CD220 antibody



Catalog Number: 103849

Insulin Receptor / CD220 / INSR Antibody, Rabbit
PAb, Antigen Affinity Purified,
Immunohistochemistry

Immunochemical staining of human INSR in
human pancreas with rabbit polyclonal antibody
(15 µg/mL, formalin-fixed paraffin embedded
sections).