

Anti-P4HB antibody



Catalog Number: 103622

Product name

Anti-P4HB antibody

Immunogen

[Mouse P4HB \(His Tag\) recombinant protein](#)

Specificity

Mouse P4HB

Antibody description

Rabbit polyclonal to P4HB

Preparation

Produced in rabbits immunized with purified, recombinant Mouse P4HB (rM P4HB; NP_035162.1; Met 1-Lys 506). P4HB specific IgG was purified by Mouse P4HB affinity chromatography.

Formulation

0.2 μ m filtered solution in PBS with 5% trehalose

Storage

This antibody can be stored at 2°C-8°C for one month without detectable loss of activity. Antibody products are stable for twelve months from date of receipt when stored at -20°C to -80°C.

Preservative-Free.

Sodium azide is recommended to avoid contamination (final concentration 0.05%-0.1%). It is toxic to cells and should be disposed of properly. Avoid repeated freeze-thaw cycles.

Clonality

Polyclonal

Ig Type

Rabbit IgG

Applications

ELISA, WB, IHC-P, IP

Dilutions

WB: 2-5 μ g/mL

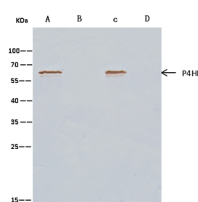
ELISA: 0.1-0.2 μ g/mL

This antibody can be used at 0.1-0.2 μ g/mL with the appropriate secondary reagents to detect Mouse P4HB. The detection limit for Mouse P4HB is approximately 0.00245 ng/well.

IHC-P: 0.1-2 μ g/mL

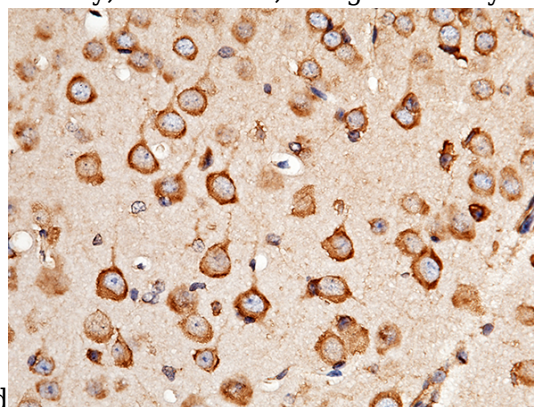
IP: 1-4 μ g/mg of lysate

Validations



Lanes	A		B		C		D	
Items	293T				HepG2			
Sample (whole cell lysate)								
Sample quantity	0.5 mg							
IP antibody type	mP4HB-RP02		Rabbit Blank IgG		mP4HB-RP02		Rabbit Blank IgG	
IP antibody quantity	2 μ g							
Protein G agarose	15 μ l of 50% Protein G Agarose							
Gel	13%SDS-PAGE reducing gel							
Primary antibody	mP4HB antibody at 5 μ g/ml [Cat# 50638-RP02]							
Secondary antibody	Clean-Blot IP Detection Reagent (HRP) at 1:1000 dilution.							

P4HB Antibody, Rabbit PAb, Antigen Affinity



Purified

P4HB Antibody, Rabbit PAb, Antigen Affinity Purified, Immunohistochemistry

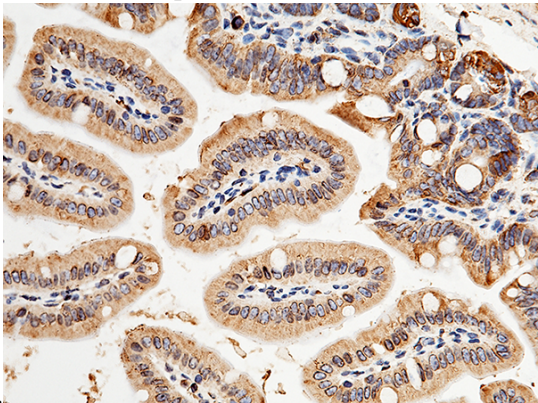
Immunochemical staining of mouse P4HB in mouse brain with rabbit polyclonal antibody (1

Anti-P4HB antibody



Catalog Number: 103622

μg/mL, formalin-fixed paraffin embedded

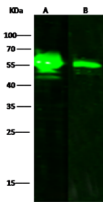


sections).

P4HB Antibody, Rabbit PAb, Antigen Affinity Purified, Immunohistochemistry

Immunochemical staining of mouse P4HB in

mouse intestine with rabbit polyclonal antibody (1 μg/mL, formalin-fixed paraffin embedded



Items	Lanes	
	A	B
Sample (whole cell lysate)	HepG2	293T
Sample Volume (μg/lane)	30	
Gel	13% SDS-PAGE reducing gel	
Recommended Concentration	2-5 μg/ml	
Secondary Antibody	Dylight 800-labeled Antibody To Rabbit IgG (H+L), at 1:5000 dilution.	

sections).

P4HB Antibody, Rabbit PAb, Antigen Affinity Purified, Western blot