

# Anti-Acetylcholinesterase antibody



Catalog Number: 103602

## Product name

Anti-Acetylcholinesterase antibody

## Immunogen

[Mouse Acetylcholinesterase \(His Tag\) recombinant protein](#)

## Specificity

Mouse Acetylcholinesterase / ACHE

## Antibody description

Rabbit polyclonal to Acetylcholinesterase

## Preparation

Produced in rabbits immunized with purified, recombinant Mouse Acetylcholinesterase / ACHE (rM Acetylcholinesterase / ACHE; NP\_033729.1; Met 1-Leu 614). Acetylcholinesterase / ACHE specific IgG was purified by Mouse Acetylcholinesterase / ACHE affinity chromatography.

## Formulation

0.2 µm filtered solution in PBS with 5% trehalose

## Storage

This antibody can be stored at 2°C-8°C for one month without detectable loss of activity. Antibody products are stable for twelve months from date of receipt when stored at -20°C to -80°C.

Preservative-Free.

Sodium azide is recommended to avoid contamination (final concentration 0.05%-0.1%). It is toxic to cells and should be disposed of properly. Avoid repeated freeze-thaw cycles.

## Clonality

Polyclonal

## Ig Type

Rabbit IgG

## Applications

ELISA, IHC-P

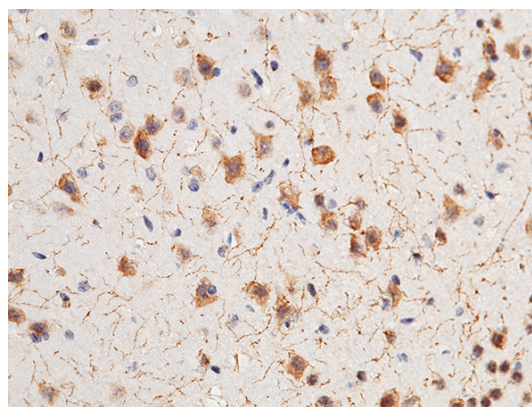
## Dilutions

ELISA: 0.1-0.2 µg/mL

This antibody can be used at 0.1-0.2 µg/mL with the appropriate secondary reagents to detect Mouse ACHE. The detection limit for Mouse ACHE is approximately 0.00975 ng/well.

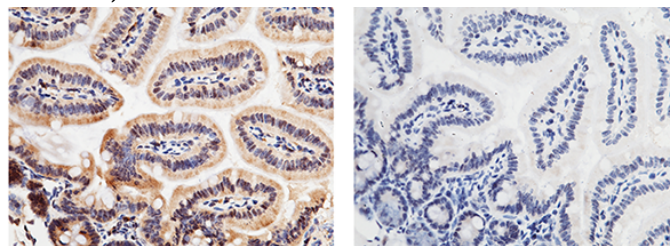
IHC-P: 0.1-2 µg/mL

## Validations



Acetylcholinesterase / ACHE Antibody, Rabbit PAb, Antigen Affinity Purified, Immunohistochemistry

Immunochemical staining of mouse ACHE in mouse brain with rabbit polyclonal antibody (1 µg/mL, formalin-fixed paraffin embedded sections).



ACHE Antibody +  
ACHE Antibody -

Acetylcholinesterase / ACHE Antibody, Rabbit

# Anti-Acetylcholinesterase antibody

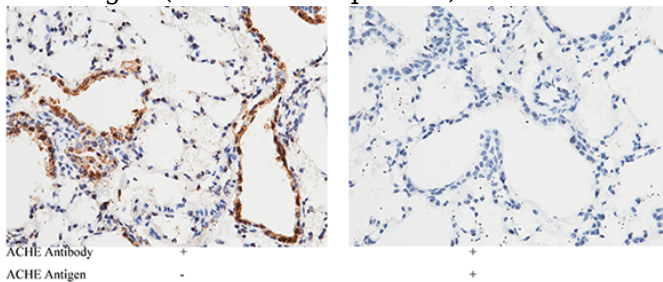


Catalog Number: 103602

---

PAb, Antigen Affinity Purified,  
Immunohistochemistry

Immunochemical staining of mouse ACHE in mouse intestine with rabbit polyclonal antibody (1 µg/mL, formalin-fixed paraffin embedded sections). The left panel: tissue incubated with primary antibody; The right panel: tissue incubated with the mixture of primary antibody and antigen (recombinant protein).



Acetylcholinesterase / ACHE Antibody, Rabbit  
PAb, Antigen Affinity Purified,  
Immunohistochemistry

Immunochemical staining of mouse ACHE in mouse lung with rabbit polyclonal antibody (1 µg/mL, formalin-fixed paraffin embedded sections). The left panel: tissue incubated with primary antibody; The right panel: tissue incubated with the mixture of primary antibody and antigen (recombinant protein).