

Anti-Carbonic Anhydrase XIII/CA13 antibody



Catalog Number: 103582

Product name

Anti-Carbonic Anhydrase XIII/CA13 antibody

Immunogen

[Human Carbonic Anhydrase XIII/CA13 \(His Tag\) recombinant protein](#)

Specificity

Human Carbonic Anhydrase XIII / CA13

Antibody description

Rabbit polyclonal to Carbonic Anhydrase XIII/CA13

Preparation

Produced in rabbits immunized with purified, recombinant Human Carbonic Anhydrase XIII / CA13 (rh Carbonic Anhydrase XIII / CA13; NP_940986.1; Met 1-His 262). Carbonic Anhydrase XIII / CA13 specific IgG was purified by Human Carbonic Anhydrase XIII / CA13 affinity chromatography.

Formulation

0.2 µm filtered solution in PBS with 5% trehalose

Storage

This antibody can be stored at 2°C-8°C for one month without detectable loss of activity. Antibody products are stable for twelve months from date of receipt when stored at -20°C to -80°C. Preservative-Free.

Sodium azide is recommended to avoid contamination (final concentration 0.05%-0.1%). It is toxic to cells and should be disposed of properly. Avoid repeated freeze-thaw cycles.

Clonality

Polyclonal

Ig Type

Rabbit IgG

Applications

ELISA, WB, IP

Dilutions

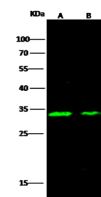
WB: 1-2 µg/mL

ELISA: 0.1-0.2 µg/mL

This antibody can be used at 0.1-0.2 µg/mL with the appropriate secondary reagents to detect Human CA13. The detection limit for Human CA13 is approximately 0.00975 ng/well.

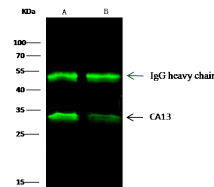
IP: 4-6 µg/mg of lysate

Validations



| Items | Lanes | A | B |
|----------------------------|---|-------|------|
| Sample (whole cell lysate) | | HepG2 | K562 |
| Sample Volume (µg/lane) | | 30 | 30 |
| Gel | 13% SDS-PAGE reducing gel | | |
| Recommended Concentration | 1-2 µg/ml | | |
| Secondary Antibody | DyLight 800-labeled Antibody To Rabbit IgG (H+L), at 1:5000 dilution. | | |

Carbonic Anhydrase XIII / CA13 Antibody, Rabbit PAb, Antigen Affinity Purified, Western blot



| Items | Lanes | A | B |
|----------------------------|---|--------------------------------|------|
| Sample (whole cell lysate) | | HepG2 | K562 |
| Sample quantity | | 0.5 mg | |
| IP antibody quantity | | 2 µg | |
| Protein G agarose | | 15 µl of 50% Protein G Agarose | |
| Gel | 13% SDS-PAGE reducing gel | | |
| Primary antibody | CA13 antibody at 2 µg/ml [Cat# 10461-RP02] | | |
| Secondary antibody | DyLight 800-labeled antibody to rabbit IgG (H+L), at 1:5000 dilution. | | |

Carbonic Anhydrase XIII / CA13 Antibody, Rabbit PAb, Antigen Affinity Purified, Immunoprecipitation