

# Anti-Latexin antibody



Catalog Number: 103560

## Product name

Anti-Latexin antibody

## Immunogen

[Mouse Latexin \(His Tag\) recombinant protein](#)

## Specificity

Mouse Latexin / LXN

## Antibody description

Rabbit polyclonal to Latexin

## Preparation

Produced in rabbits immunized with purified, recombinant Mouse Latexin / LXN (rM Latexin / LXN; NP\_058033.2; Glu 2-Glu 222). Latexin / LXN specific IgG was purified by Mouse Latexin / LXN affinity chromatography.

## Formulation

0.2 µm filtered solution in PBS with 5% trehalose

## Storage

This antibody can be stored at 2°C-8°C for one month without detectable loss of activity. Antibody products are stable for twelve months from date of receipt when stored at -20°C to -80°C.

Preservative-Free.

Sodium azide is recommended to avoid contamination (final concentration 0.05%-0.1%). It is toxic to cells and should be disposed of properly. Avoid repeated freeze-thaw cycles.

## Clonality

Polyclonal

## Ig Type

Rabbit IgG

## Applications

ELISA, WB, IP

## Dilutions

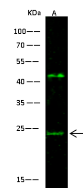
WB: 10-30 µg/mL

ELISA: 0.1-0.2 µg/mL

This antibody can be used at 0.1-0.2 µg/mL with the appropriate secondary reagents to detect Mouse LXN. The detection limit for Mouse LXN is approximately 0.00245 µg/well.

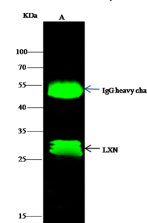
IP: 0.5-2 µg/mg of lysate

## Validations



Items	Lanes
Sample (whole cell lysate)	Hela
Sample Volume (µg/lane)	30
Gel	13% SDS-PAGE reducing gel
Recommended Concentration	10-30 µg/ml
Secondary Antibody	Dylight 800 labeled Antibody to Rabbit IgG (H+L), at 1:5000 dilution.
Developed using Odyssey imaging system	
Explanation	Predicted band size : 26 kDa Observed band size : 24 kDa Additional bands at : 42 kDa (We are unsure as to the identity of these extra bands. They are possible non-specific bindings).

Latexin / LXN Antibody, Rabbit PAb, Antigen Affinity Purified, Western blot



Items	Lanes
Sample (whole cell lysate)	MCF-7
Sample quantity	0.5 mg
IP antibody quantity	2 µg
Protein G agarose	15 µl of 50 % Protein G Agarose
Gel	13 % SDS-PAGE reducing gel
Primary antibody	mLXN antibody at 10 µg/ml
Secondary antibody	Dylight 800-labeled antibody to rabbit IgG (H+L), at 1:5000 dilution

Latexin / LXN Antibody, Rabbit PAb, Antigen Affinity Purified