

# Anti-SCF/C-kit ligand antibody



Catalog Number: 103447

## Product name

Anti-SCF/C-kit ligand antibody

## Immunogen

[Mouse SCF/C-kit ligand \(His Tag\) recombinant protein](#)

## Specificity

Mouse SCF / C-kit ligand

## Antibody description

Rabbit polyclonal to SCF/C-kit ligand

## Preparation

Produced in rabbits immunized with purified, recombinant Mouse SCF / C-kit ligand (rM SCF / C-kit ligand; P20826-1; Met 1-Ala 189). SCF / C-kit ligand specific IgG was purified by Mouse SCF / C-kit ligand affinity chromatography.

## Formulation

0.2 µm filtered solution in PBS with 5% trehalose

## Storage

This antibody can be stored at 2°C-8°C for one month without detectable loss of activity. Antibody products are stable for twelve months from date of receipt when stored at -20°C to -80°C.

Preservative-Free.

Sodium azide is recommended to avoid contamination (final concentration 0.05%-0.1%). It is toxic to cells and should be disposed of properly. Avoid repeated freeze-thaw cycles.

## Clonality

Polyclonal

## Ig Type

Rabbit IgG

## Applications

ELISA, WB

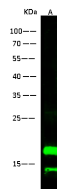
## Dilutions

WB: 1-10 µg/mL

ELISA: 0.1-0.2 µg/mL

This antibody can be used at 0.1-0.2 µg/mL with the appropriate secondary reagents to detect Mouse KITL (aa 1-189). The detection limit for Mouse KITL (aa 1-189) is approximately 0.00245 ng/well.

## Validations



Items	Lanes	A
Sample (whole cell lysate)		Jurkat
Sample volume (µg/lane)		30
Gel		13% SDS-PAGE, reducing gel
Recommended Concentration		1-10 µg/ml
Secondary Antibody		Dylight 800 labeled Antibody to Rabbit IgG (H+L), at 1:5000 dilution.
Developed using Odyssey imaging system.		
Explanation		Predicted band size : 31 kDa Observed band size : 31 kDa Additional bands at : 13 kDa (We are unsure as to the identity of these extra bands. They are possible non-specific bindings).

SCF / C-kit ligand Antibody, Rabbit PAb, Antigen Affinity Purified, Western blot