

Anti-HSPD1/HSP60 antibody



Catalog Number: 103438

Product name

Anti-HSPD1/HSP60 antibody

Immunogen

[Mouse HSPD1/HSP60 \(His Tag\) recombinant protein](#)

Specificity

Mouse HSPD1 / HSP60

Antibody description

Rabbit polyclonal to HSPD1/HSP60

Preparation

Produced in rabbits immunized with purified, recombinant Mouse HSPD1 / HSP60 (rM HSPD1 / HSP60; NP_034607.3; Leu 2-Phe 573). HSPD1 / HSP60 specific IgG was purified by Mouse HSPD1 / HSP60 affinity chromatography.

Formulation

0.2 µm filtered solution in PBS with 5% trehalose

Storage

This antibody can be stored at 2°C-8°C for one month without detectable loss of activity. Antibody products are stable for twelve months from date of receipt when stored at -20°C to -80°C.

Preservative-Free.

Sodium azide is recommended to avoid contamination (final concentration 0.05%-0.1%). It is toxic to cells and should be disposed of properly. Avoid repeated freeze-thaw cycles.

Clonality

Polyclonal

Ig Type

Rabbit IgG

Applications

ELISA, WB, IHC-P, IP

Dilutions

WB: 1-10 µg/mL

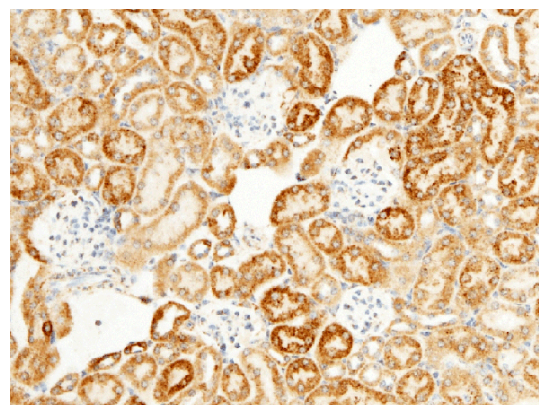
ELISA: 0.1-0.2 µg/mL

This antibody can be used at 0.1-0.2 µg/mL with the appropriate secondary reagents to detect Mouse HSP60. The detection limit for Mouse HSP60 is approximately 0.039 ng/well.

IHC-P: 0.05-2 µg/mL

IP: 1-4 µg/mg of lysate

Validations



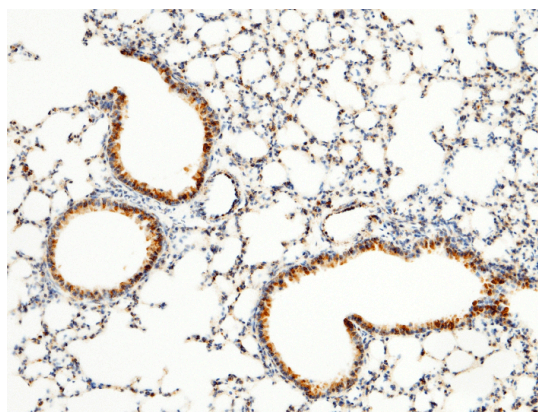
HSPD1 / HSP60 Antibody, Rabbit PAb, Antigen Affinity Purified, Immunohistochemistry

Immunochemical staining of mouse HSP60 in mouse kidney with rabbit polyclonal antibody (0.2 µg/mL, formalin-fixed paraffin embedded sections). Positive staining was localized to nephric tubule.

Anti-HSPD1/HSP60 antibody



Catalog Number: 103438

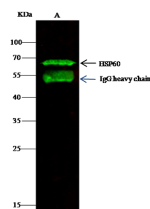


HSPD1 / HSP60 Antibody, Rabbit PAb, Antigen Affinity Purified, Immunohistochemistry

Immunochemical staining of mouse HSP60 in mouse lung with rabbit polyclonal antibody (0.2 µg/mL, formalin-fixed paraffin embedded

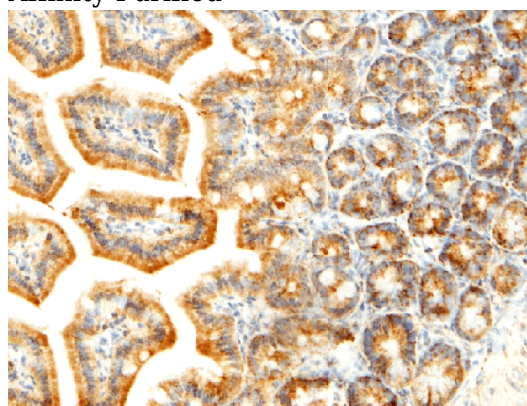
sections).

HSPD1 / HSP60 Antibody, Rabbit PAb, Antigen Affinity Purified, Western blot



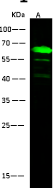
Lanes	A
Sample (whole cell lysate)	HspG2
Sample quantity	0.5 mg
IP antibody quantity	2 µg
Protein G agarose	15 µl of 50% Protein G Agarose
Gel	13% SDS-PAGE reducing gel
Primary antibody	mHSP60 antibody at 5 µg/ml
Secondary antibody	Dylight 800-labeled antibody to rabbit IgG (H+L), at 1:5000 dilution

HSPD1 / HSP60 Antibody, Rabbit PAb, Antigen Affinity Purified



HSPD1 / HSP60 Antibody, Rabbit PAb, Antigen Affinity Purified, Immunohistochemistry

Immunochemical staining of mouse HSP60 in mouse intestine with rabbit polyclonal antibody (0.2 µg/mL, formalin-fixed paraffin embedded sections).



Lanes	A
Sample (whole cell lysate)	A431
Sample Volume (µg/lane)	30
Gel	13% SDS-PAGE reducing gel
Recommended Concentration	1-10 µg/ml
Secondary Antibody	Dylight 800-labeled Antibody to Rabbit IgG (H+L), at 1:5000 dilution
Developed using Odyssey imaging system.	
Explanation	Predicted band size : 61 kDa Observed band size : 61 kDa Additional bands at : 55 kDa and 40 kDa [We are unsure as to the identity of these extra bands. They are possible non-specific bindings].