

Anti-STIM1 antibody



Catalog Number: 102890

Product name

Anti-STIM1 antibody

Immunogen

[Human STIM1 \(His Tag\) recombinant protein](#)

Specificity

Human STIM1 / GOK

Antibody description

Rabbit polyclonal to STIM1

Preparation

Produced in rabbits immunized with purified, recombinant Human STIM1 (rh STIM1; NP_003147.2; Met 1-Asp 213). STIM1 specific IgG was purified by human STIM1 affinity chromatography

Formulation

0.2 µm filtered solution in PBS with 5% trehalose

Storage

This antibody can be stored at 2°C-8°C for one month without detectable loss of activity. Antibody products are stable for twelve months from date of receipt when stored at -20°C to -80°C. Preservative-Free.

Sodium azide is recommended to avoid contamination (final concentration 0.05%-0.1%). It is toxic to cells and should be disposed of properly. Avoid repeated freeze-thaw cycles.

Clonality

Polyclonal

Ig Type

Rabbit IgG

Applications

ELISA, WB, IHC-P, IP

Dilutions

WB: 20-40 µg/mL

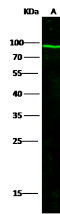
ELISA: 0.1-0.2 µg/mL

This antibody can be used at 0.1-0.2 µg/mL with the appropriate secondary reagents to detect Human STIM1. The detection limit for Human STIM1 is approximately 0.00245 ng/well.

IHC-P: 0.1-2 µg/mL

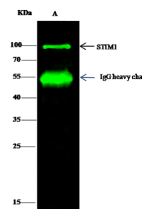
IP: 1-4 µg/mg of lysate

Validations



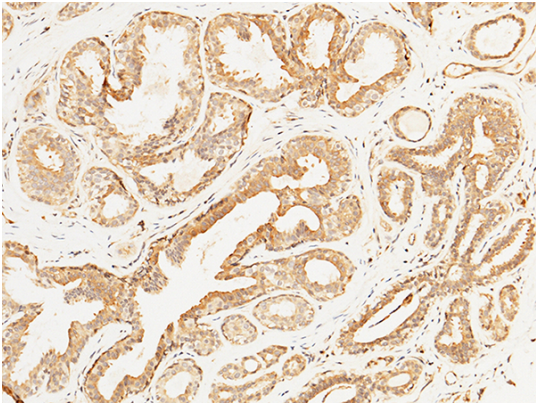
Items	Lanes
Sample (Membrane lysate)	A HepG2
Sample Volume (µg/Lane)	20
Gel	13% SDS-PAGE reducing gel
Recommended Concentration	20-40 µg/ml
Secondary Antibody	Dylight 800 labeled Antibody to Rabbit IgG (H+L), at 1:5000 dilution.
Developed using	Odyssey imaging system
Explanation	Predicted band size : 77kDa Observed band size : 94 kDa

STIM1 / GOK Antibody, Rabbit PAb, Antigen Affinity Purified, Western blot



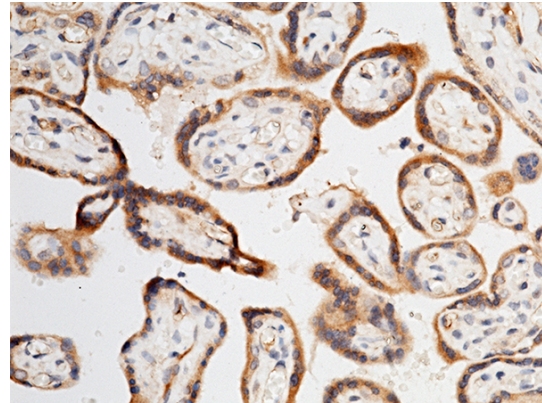
Items	Lanes
Sample (whole cell lysate)	A HepG2
Sample quantity	0.5 mg
IP antibody quantity	2 µg
Protein G agarose	15 µl of 50% Protein G Agarose
Gel	13% SDS-PAGE reducing gel
Primary antibody	STIM1 antibody at 10 µg/ml
Secondary antibody	Dylight 800-labeled antibody to rabbit IgG (H+L), at 1:5000 dilution.

STIM1 / GOK Antibody, Rabbit PAb, Antigen Affinity Purified



STIM1 / GOK Antibody, Rabbit PAb, Antigen Affinity Purified, Immunohistochemistry

Immunochemical staining of human STIM1 in human breast carcinoma with rabbit polyclonal antibody (1 $\mu\text{g}/\text{mL}$, formalin-fixed paraffin embedded sections).



STIM1 / GOK Antibody, Rabbit PAb, Antigen Affinity Purified, Immunohistochemistry

Immunochemical staining of human STIM1 in human placenta with rabbit polyclonal antibody (1 $\mu\text{g}/\text{mL}$, formalin-fixed paraffin embedded sections).