

# Anti-SerpinB8 antibody



Catalog Number: 102806

## Product name

Anti-SerpinB8 antibody

## Immunogen

[Mouse SerpinB8 \(His Tag\) recombinant protein](#)

## Specificity

Mouse SERPINB8 / SerpinB8

## Antibody description

Rabbit polyclonal to SerpinB8

## Preparation

Produced in rabbits immunized with purified, recombinant Mouse SerpinB8 (rM SerpinB8; NP\_035589.1; Met 1-Pro 374). SerpinB8 specific IgG was purified by Mouse SerpinB8 affinity chromatography.

## Formulation

0.2 µm filtered solution in PBS with 5% trehalose

## Storage

This antibody can be stored at 2°C-8°C for one month without detectable loss of activity. Antibody products are stable for twelve months from date of receipt when stored at -20°C to -80°C.

Preservative-Free.

Sodium azide is recommended to avoid contamination (final concentration 0.05%-0.1%). It is toxic to cells and should be disposed of properly. Avoid repeated freeze-thaw cycles.

## Clonality

Polyclonal

## Ig Type

Rabbit IgG

## Applications

ELISA, IP

## Dilutions

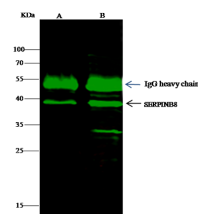
WB: 1-10 µg/mL

ELISA: 0.1-0.2 µg/mL

This antibody can be used at 0.1-0.2 µg/mL with the appropriate secondary reagents to detect Mouse SERPINB8. The detection limit for Mouse SERPINB8 is approximately 0.00245 ng/well.

IP: 0.5-2 µg/mg of lysate

## Validations



Lanes	A	B
Sample (whole cell lysate)	HepG2	293T
Sample quantity	0.5 mg	
IP antibody quantity	2 µg	
Protein G agarose	15 µl of 50% Protein G Agarose	
Gel	15% SDS-PAGE reducing gel	
Primary antibody	SERPINB8 antibody at 10 µg/ml	
Secondary antibody	Dylight 800-labeled antibody to rabbit IgG (D114), at 1:5000 dilution.	

SerpinB8 Antibody, Rabbit PAb, Antigen Affinity Purified, Immunoprecipitation