

# Anti-CD90/THY-1 antibody



Catalog Number: 102753

## Product name

Anti-CD90/THY-1 antibody

## Immunogen

[Mouse CD90/THY-1 \(His Tag\) recombinant protein](#)

## Specificity

Mouse THY1 / CD90

## Antibody description

Rabbit polyclonal to CD90/THY-1

## Preparation

Produced in rabbits immunized with purified, recombinant Mouse THY1 (rM THY1; NP\_033408.1; Met 1-Cys 131). THY1 specific IgG was purified by mouse THY1 affinity chromatography

## Formulation

0.2 µm filtered solution in PBS with 5% trehalose

## Storage

This antibody can be stored at 2°C-8°C for one month without detectable loss of activity. Antibody products are stable for twelve months from date of receipt when stored at -20°C to -80°C.

Preservative-Free.

Sodium azide is recommended to avoid contamination (final concentration 0.05%-0.1%). It is toxic to cells and should be disposed of properly. Avoid repeated freeze-thaw cycles.

## Clonality

Polyclonal

## Ig Type

Rabbit IgG

## Applications

ELISA, IHC-P

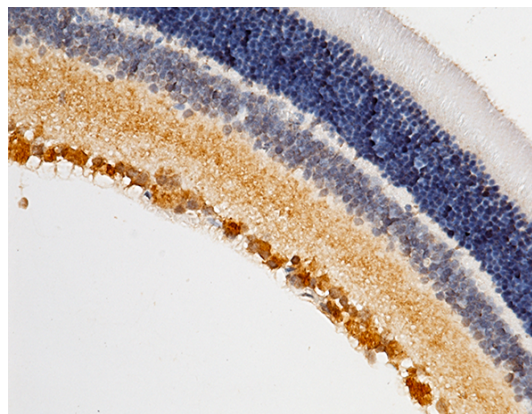
## Dilutions

ELISA: 0.1-0.2 µg/mL

This antibody can be used at 0.1-0.2 µg/mL with the appropriate secondary reagents to detect Mouse THY1. The detection limit for Mouse THY1 is approximately 0.039 ng/well.

IHC-P: 0.1-2 µg/mL

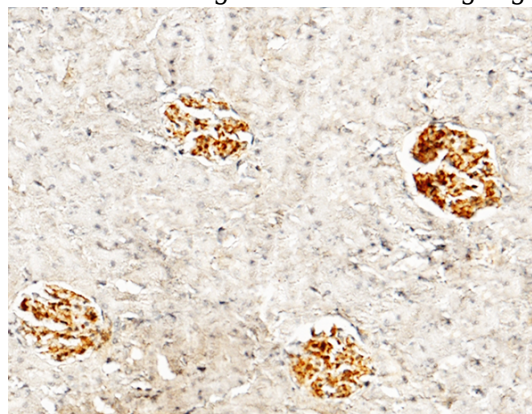
## Validations



CD90 / THY-1 Antibody, Rabbit PAb, Antigen Affinity Purified, Immunohistochemistry

Immunochemical staining of mouse THY1 in rat retina with rabbit polyclonal antibody (0.5 µg/mL, formalin-fixed paraffin embedded sections).

Positive staining was localized to ganglion cells.



CD90 / THY-1 Antibody, Rabbit PAb, Antigen Affinity Purified, Immunohistochemistry

# Anti-CD90/THY-1 antibody

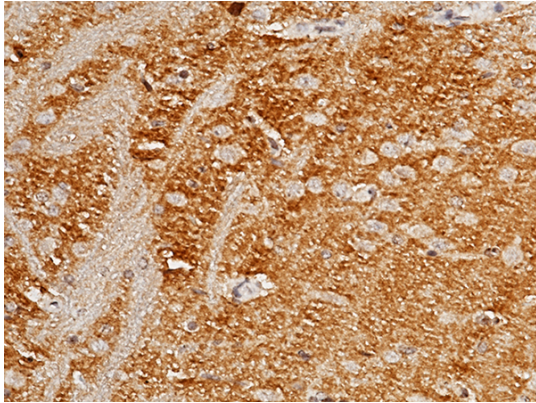


Catalog Number: 102753

---

Immunochemical staining of mouse THY1 in rat kidney with rabbit polyclonal antibody (0.5 µg/mL, formalin-fixed paraffin embedded sections).

Positive staining was localized to renal glomerulus.



CD90 / THY-1 Antibody, Rabbit PAb, Antigen Affinity Purified, Immunohistochemistry

Immunochemical staining of mouse THY1 in rat brain with rabbit polyclonal antibody (0.5 µg/mL, formalin-fixed paraffin embedded sections).