

# Anti-KLK7/Kallikrein 7(PRSS6) antibody



Catalog Number: 102692

## Product name

Anti-KLK7/Kallikrein 7(PRSS6) antibody

## Immunogen

[Human KLK7/Kallikrein 7\(PRSS6\) \(His Tag\) recombinant protein](#)

## Specificity

Human Kallikrein-7 / KLK7

## Antibody description

Rabbit polyclonal to KLK7/Kallikrein 7(PRSS6)

## Preparation

Produced in rabbits immunized with purified, recombinant Human KLK7 (rh KLK7; NP\_005037.1; Met 1-Arg 253). KLK7 specific IgG was purified by human KLK7 affinity chromatography

## Formulation

0.2 µm filtered solution in PBS with 5% trehalose

## Storage

This antibody can be stored at 2°C-8°C for one month without detectable loss of activity. Antibody products are stable for twelve months from date of receipt when stored at -20°C to -80°C.

Preservative-Free.

Sodium azide is recommended to avoid contamination (final concentration 0.05%-0.1%). It is toxic to cells and should be disposed of properly. Avoid repeated freeze-thaw cycles.

## Clonality

Polyclonal

## Ig Type

Rabbit IgG

## Applications

ELISA, IHC-P

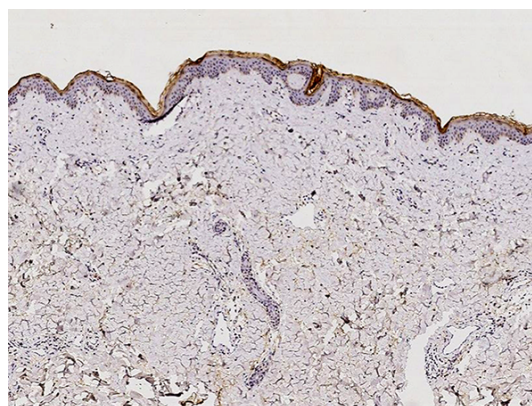
## Dilutions

ELISA: 0.1-0.2 µg/mL

This antibody can be used at 0.1-0.2 µg/mL with the appropriate secondary reagents to detect Human KLK7. The detection limit for Human KLK7 is approximately 0.00245 ng/well.

IHC-P: 0.1-2 µg/mL

## Validations



KLK-7 / Kallikrein-7 / PRSS6 Antibody, Rabbit PAb, Antigen Affinity Purified, Immunohistochemistry

Immunochemical staining of human KLK7 in human skin with rabbit polyclonal antibody (1 µg/mL, formalin-fixed paraffin embedded sections). Positive staining was localized to keratinocytes in the epidermis.