

Anti-MEP1A antibody



Catalog Number: 102393

Product name

Anti-MEP1A antibody

Immunogen

[Mouse MEP1A \(His Tag\) recombinant protein](#)

Specificity

Mouse MEP1A / Endopeptidase-2

Antibody description

Rabbit polyclonal to MEP1A

Preparation

Produced in rabbits immunized with purified, recombinant Mouse MEP1A (rM MEP1A; NP_032611.2; Met 1-Arg 615). MEP1A specific IgG was purified by mouse MEP1A affinity chromatography.

Formulation

0.2 µm filtered solution in PBS with 5% trehalose

Storage

This antibody can be stored at 2°C-8°C for one month without detectable loss of activity. Antibody products are stable for twelve months from date of receipt when stored at -20°C to -80°C.

Preservative-Free.

Sodium azide is recommended to avoid contamination (final concentration 0.05%-0.1%). It is toxic to cells and should be disposed of properly. Avoid repeated freeze-thaw cycles.

Clonality

Polyclonal

Ig Type

Rabbit IgG

Applications

ELISA, WB

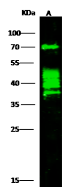
Dilutions

WB: 10-20 µg/mL

ELISA: 0.5-1.0 µg/mL

This antibody can be used at 0.5-1.0 µg/mL with the appropriate secondary reagents to detect Mouse MEP1A. The detection limit for Mouse MEP1A is 0.00245 ng/well.

Validations



| Lanes | A |
|--|--|
| Items | |
| Sample (Membrane lysate) | A431 |
| Sample Volume (µg/lane) | 20 |
| Gel | 13% SDS-PAGE reducing gel |
| Recommended Concentration | 10.20µg/ml |
| Secondary Antibody | Dylight 800 labeled Antibody to Rabbit IgG (1:1), at 1:5000 dilution. |
| Developed using Odyssey imaging system | |
| Explanation | Predicted band size: 84 kDa Observed band size: 70 kDa Additional bands at: 40 kDa (We are unsure as to the identity of these extra bands. They are possible non-specific bindings). |

MEP1A / Endopeptidase-2 Antibody, Rabbit PAb, Antigen Affinity Purified, Western blot