

# Anti-TFPI2 antibody



Catalog Number: 102039

## Product name

Anti-TFPI2 antibody

## Immunogen

[Human TFPI2 \(His Tag\) recombinant protein](#)

## Specificity

Human TFPI2 / PP5

## Antibody description

Rabbit polyclonal to TFPI2

## Preparation

Produced in rabbits immunized with purified, recombinant Human TFPI2 (rh TFPI2; NP\_006519.1; Met 1-Lys 213). TFPI2 specific IgG was purified by human TFPI2 affinity chromatography.

## Formulation

0.2 µm filtered solution in PBS with 5% trehalose

## Storage

This antibody can be stored at 2°C-8°C for one month without detectable loss of activity. Antibody products are stable for twelve months from date of receipt when stored at -20°C to -80°C.

Preservative-Free.

Sodium azide is recommended to avoid contamination (final concentration 0.05%-0.1%). It is toxic to cells and should be disposed of properly. Avoid repeated freeze-thaw cycles.

## Clonality

Polyclonal

## Ig Type

Rabbit IgG

## Applications

ELISA, WB, IP

## Dilutions

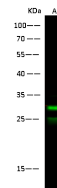
WB: 10-20 µg/mL

ELISA: 0.5-1.0 µg/mL

This antibody can be used at 0.5-1.0 µg/mL with the appropriate secondary reagents to detect Human TFPI2. The detection limit for Human TFPI2 is 0.00245 µg/well.

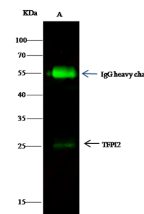
IP: 1-4 µg/mg of lysate

## Validations



Items	Lanes
Sample (whole cell lysate)	A
Sample Volume (µg/lane)	187MG
Gel	60
Recommended Concentration	13%SDS-PAGE reducing gel
Secondary Antibody	10-20 µg/ml
Antibody	Dylight 800 labeled Antibody to Rabbit IgG (H+L), at 1:5000 dilution.
Developed using Odyssey imaging system.	
Explanation	Predicted band size : 27 kDa Observed band size : 27 kDa Additional bands at : 25 kDa (We are unsure as to the identity of these extra bands. They are possible non-specific bindings).

TFPI2 / PP5 Antibody, Rabbit PAb, Antigen Affinity Purified, Western blot



Items	Lanes
Sample (whole cell lysate)	A
Sample quantity	293T
IP antibody quantity	0.5 mg
Protein G agarose	2 µg
Gel	15 µl of 50% Protein G Agarose
Primary antibody	13%SDS-PAGE reducing gel
Secondary antibody	TFPI2 His antibody at 5 µg/ml
	Dylight 800-labeled antibody to rabbit IgG (H+L), at 1:5000 dilution.

TFPI2 / PP5 Antibody, Rabbit PAb, Antigen Affinity Purified