

Anti-GREM1 antibody



Catalog Number: 100672

Product name

Anti-GREM1 antibody

Immunogen

[Mouse GREM1 \(His Tag\) recombinant protein](#)

Specificity

Mouse Gremlin 1 / GREM1

Antibody description

Rabbit polyclonal to GREM1

Preparation

Produced in rabbits immunized with purified, recombinant Mouse Gremlin 1 / GREM1 (rM Gremlin 1 / GREM1; O70326; Met1-Asp184). Gremlin 1 / GREM1 specific IgG was purified by Mouse Gremlin 1 / GREM1 affinity chromatography.

Formulation

0.2 µm filtered solution in PBS with 5% trehalose

Storage

This antibody can be stored at 2°C-8°C for one month without detectable loss of activity. Antibody products are stable for twelve months from date of receipt when stored at -20°C to -80°C.

Preservative-Free.

Sodium azide is recommended to avoid contamination (final concentration 0.05%-0.1%). It is toxic to cells and should be disposed of properly. Avoid repeated freeze-thaw cycles.

Clonality

Polyclonal

Ig Type

Rabbit IgG

Applications

ELISA, WB, IHC-P

Dilutions

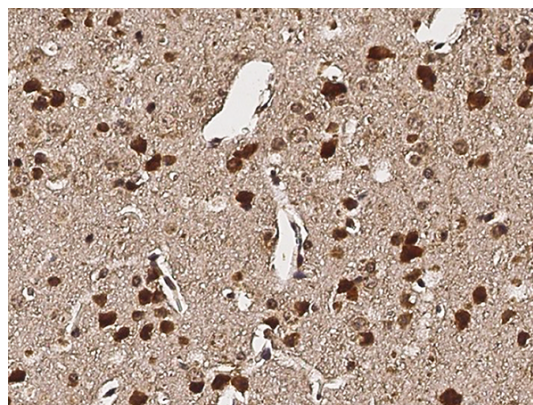
WB: 5-10 µg/mL

ELISA: 0.1-0.2 µg/mL

This antibody can be used at 0.1-0.2 µg/mL with the appropriate secondary reagents to detect Mouse Gremlin 1 / GREM1. The detection limit for Mouse Gremlin 1 / GREM1 is approximately 0.00975 ng/well.

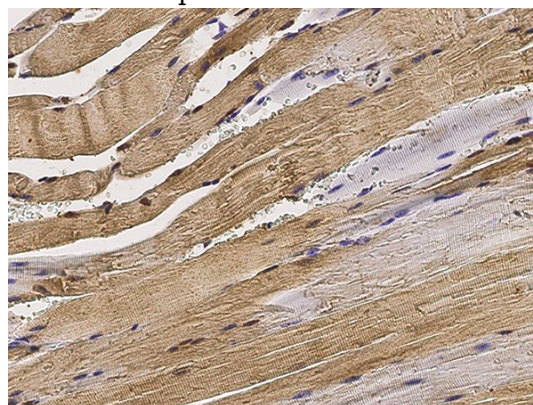
IHC-P: 1-10 µg/mL

Validations



Gremlin 1 / GREM1 Antibody, Rabbit PAb, Antigen Affinity Purified, Immunohistochemistry

Immunochemical staining of mouse GREM1 in mouse brain with rabbit polyclonal antibody (5 µg/mL, formalin-fixed paraffin embedded



sections).

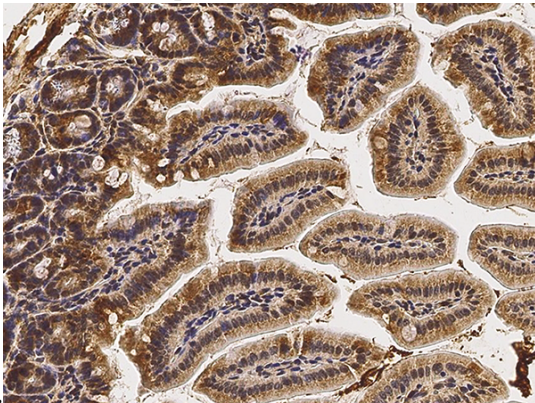
Anti-GREM1 antibody



Catalog Number: 100672

Gremlin 1 / GREM1 Antibody, Rabbit PAb, Antigen Affinity Purified, Immunohistochemistry

Immunochemical staining of mouse GREM1 in mouse heart with rabbit polyclonal antibody (5 µg/mL, formalin-fixed paraffin embedded

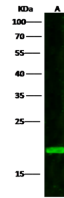


sections).

Gremlin 1 / GREM1 Antibody, Rabbit PAb, Antigen

Affinity Purified, Immunohistochemistry

Immunochemical staining of mouse GREM1 in mouse intestine with rabbit polyclonal antibody (5 µg/mL, formalin-fixed paraffin embedded



Items	Lanes	A
Sample (whole cell lysate)		HepG2
Sample Volume (µg/lane)		30
Gel		13% SDS-PAGE reducing gel
Recommended Concentration		5-10 µg/ml
Secondary Antibody		Dylight 800 labeled Antibody To Rabbit IgG (H+L), at 1:5000 dilution.

sections).

Gremlin 1 / GREM1 Antibody, Rabbit PAb, Antigen Affinity Purified, Western blot